

芯动A4莱特矿机使用说明

INNOSILICON A4 Machine User Manual



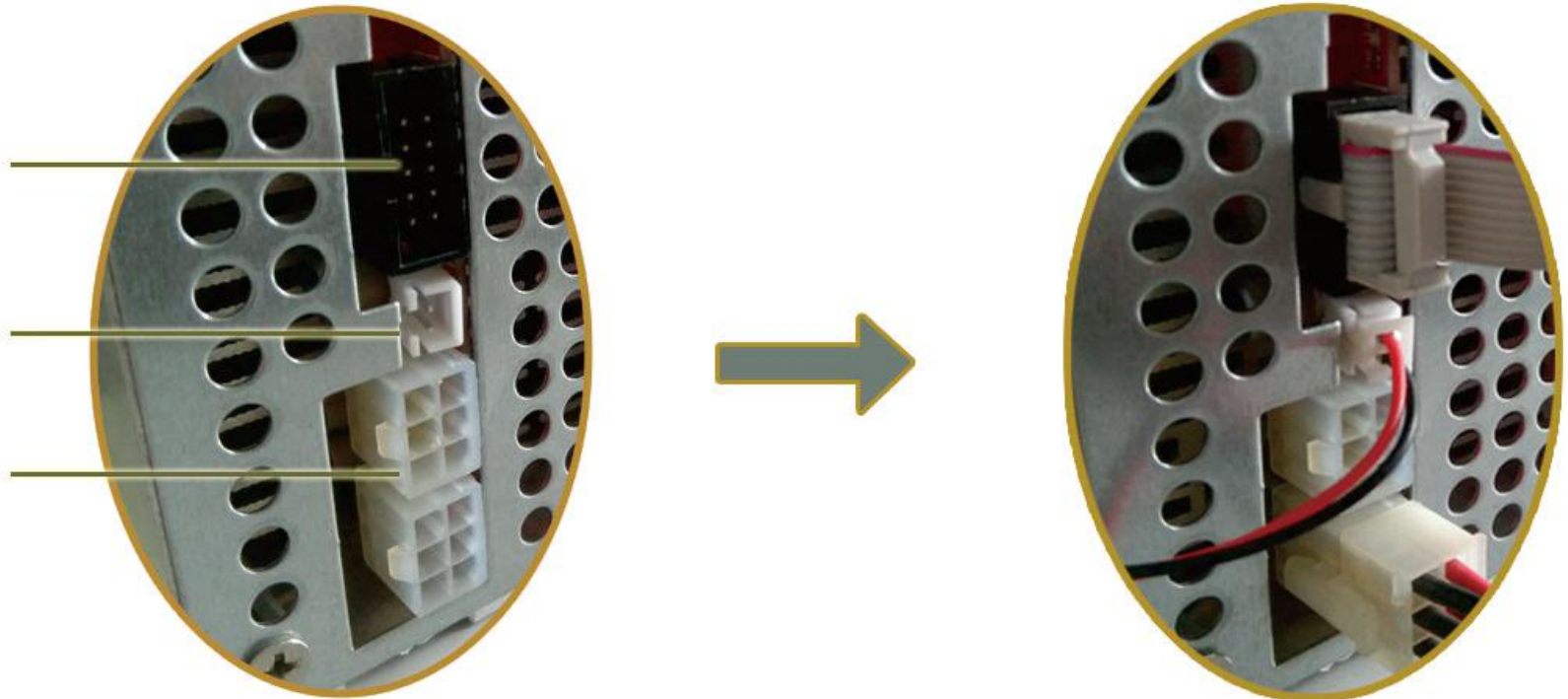
型号：G5-20

Assembly wiring instructions

10PIN USB cable interface,
and the other end connects
with the 10 PIN interface
of the controller

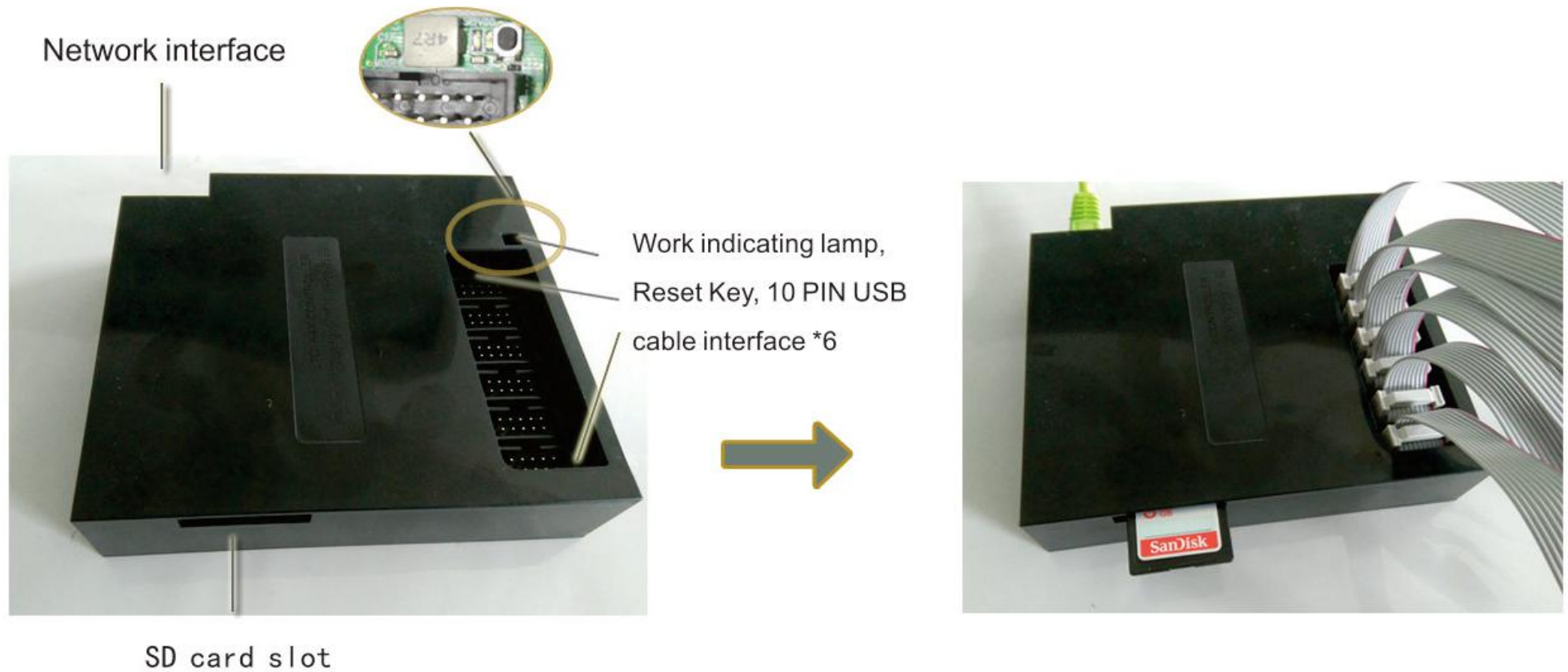
2PIN interface of the
cylinder cooling fan

Power supply
interface of 6PIN 12V



There are two reserved 6PIN 12V interfaces on the operation board. Proper functioning is available when connecting a 6PIN supply line with conventional power supply. If the 6PIN supply line heat anomaly when the mining machine is operating, please connect 2 6PIN supply lines.

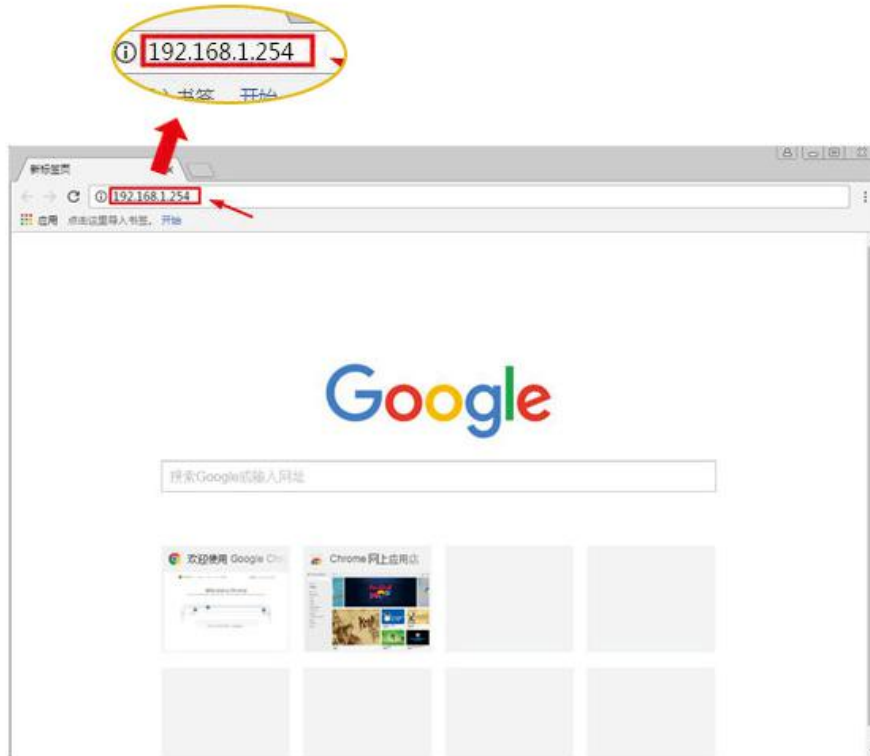
Assembly wiring instructions



*Work indicating lamp: the controller is powered if the green LED lights up. After the mining machine operating for 30 to 40 seconds, the red LED light flashes quickly to indicate that the controller has established data communication with the operator board.。

*Reset Key: when the user forgets the SD card IP for various reasons, after the green light on the controller lights up, a long press of the reset key for 5 seconds or more can restore the factory set IP: 192.168.1.254.

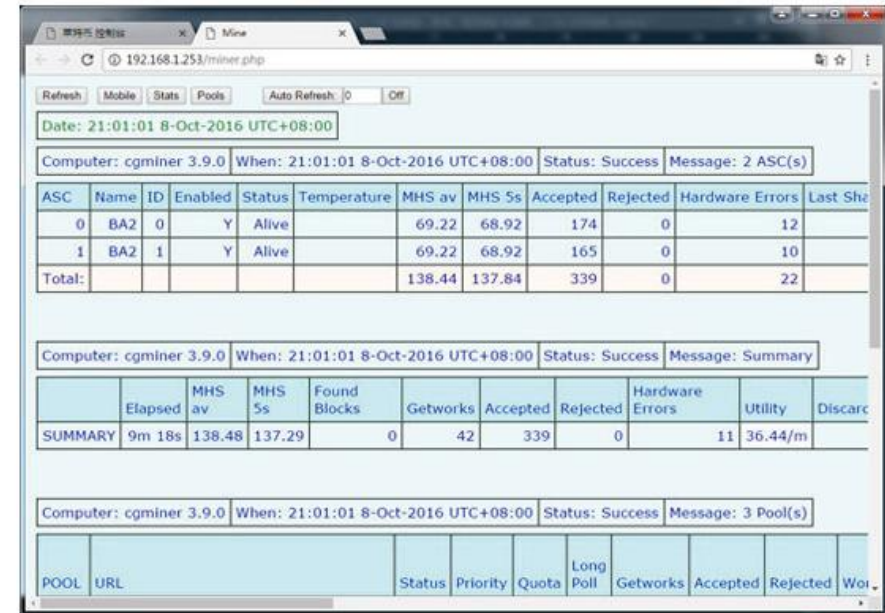
Web page setup



After the completion of mineral machine assembly, please turn on the power switch and input factory unified IP: 192.168.1.254 in the browser address bar after about 20 seconds. Then press the Enter key to confirm.



After pressing "Enter" you can enter the mining machine control page, on which the top right corner of the page provides Chinese and English language selection keys. Then users can switch it habitually.



1. Click the "confirm" button until the back of the mining machine running state showing a red "stop". Then the three mine pool addresses, account numbers, voltages and mine card speeds can be modified. (G5-20 is available of voltage and custom frequency function, for which users can modify the voltage and mine card speed.)
2. After modifying the information of account names and mine pool addresses, click the confirm button again. Then the mining machine starts to operate if there's a green "operate" showed behind the mining machine running state. Users can refresh the browser or click "refresh log" to display the real-time speed of the mining machine.
3. After modifying the information of IP address, subnet mask, gateway IP, DNS and others, please click "Set Network". Then the system will restart the software, which will re-enter the setup interface through the newly set IP address one minute later.

Click "real-time monitoring" on the control page, you can enter the advanced display interface shown above to check the running time of the machine, real-time temperature of the chip, data communication and other information.